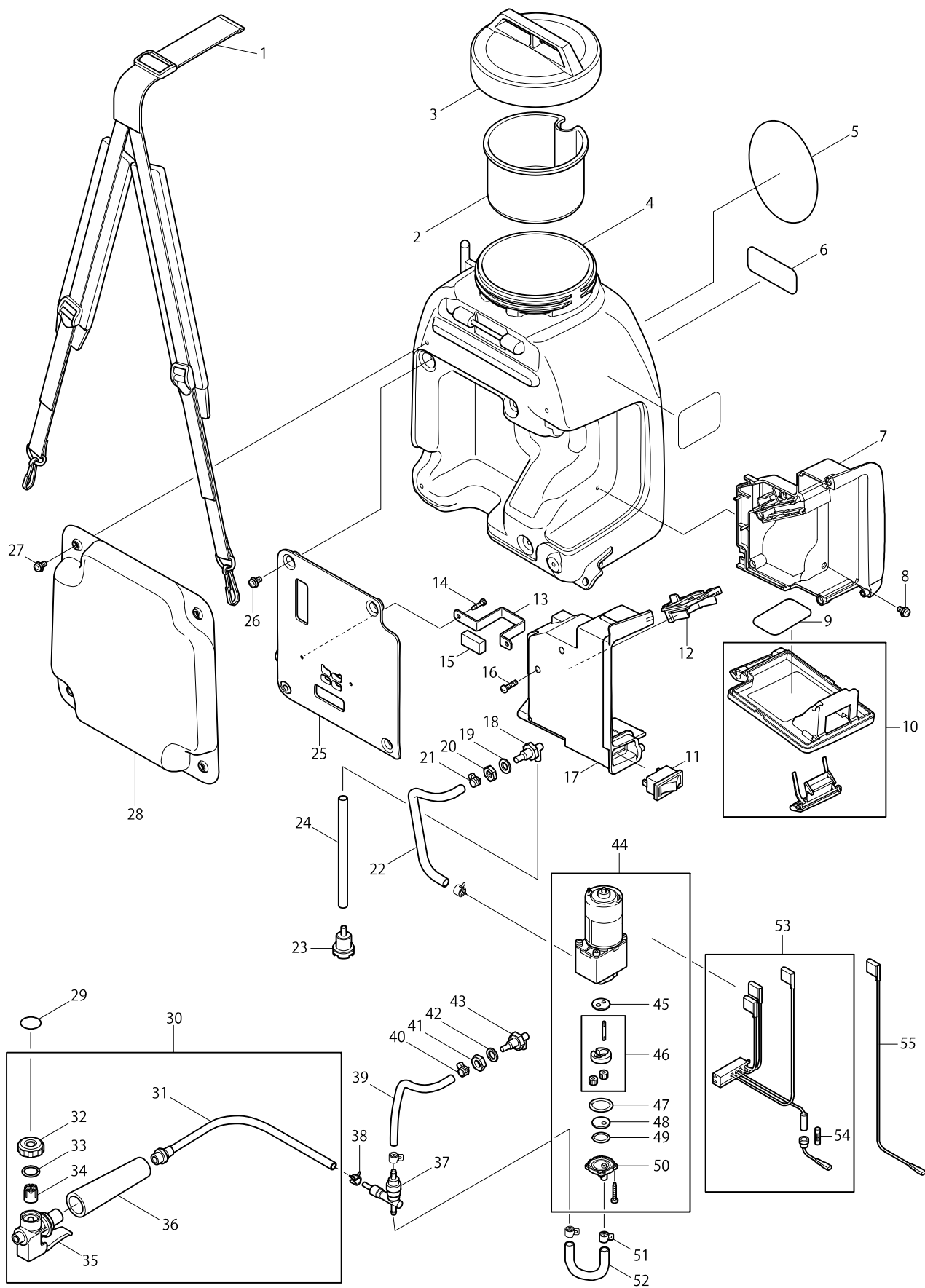


Model BVF104 AKU POSTREKOVAC 18V



Model BVF104 AKU POSTREKOVÁČ 18V

Strana 1 / 3

Položka	Objednávacie	Popis	I/C	ks	N/O	Možnosť 1	Možnosť 2	Poznámka
001	6954016000	BAND COMPL		1	*			
001-1	6954026000	BAND ASS'Y	O	1				
002	6904503601	STRAINER, TANK		1				
003	6954022000	CAP COMPLETE		1				
004	6954017003	TANK COMPLETE		1	*			
004-1	6954017004	TANK COMPLETE	O	1				
005	6954512701	INDICATION LABEL		1				
006	6954512900	MAKITA LOGO LABEL		1	*			
006-1	806Y36-5	MAKITA LOGO LABEL	<	1				
007	6951504600	BATTERY HOUSING R		1				
008	0140059160	SCREW M5X10(W,SW)		3	*			
008-1	0140059260	SCREW	O	3				
009	6954513200	INDICATION LABEL		1				
010	6951036000	COVER ASSY		1				
011	651531-8	SWITCH OR05-11B-BB-2		1				
012	643843-3	TERMINAL		1				
013	6951503501	PLATE, PUMP		1				
014	0150049850	TAPPING SCREW		2	*			
014-1	265995-6	TAPPING SCREW 4X18	O	2				
015	6951504100	CUSHION, PUMP		1				
016	0150049850	TAPPING SCREW		5	*			
016-1	265995-6	TAPPING SCREW 4X18	O	5				
017	6951504300	BATTERY HOUSING L		1				
018	6951022000	JOINT, ELBOW		1				
019	6951023000	PACKING, ELBOW		1				
020	6951024001	NUT, ELBOW		1				
021	0561100030	HOSE CLAMP		2				
022	6951503601	TUBE1		1				
023	6954021000	STRAINER, SUCTION ASSY		1				
024	6951503900	TUBE4		1				
025	6951503100	HOLDER, PUMP		1	*			
025-1	6951503101	PUMP HOLDER	O	1				
026	0140059160	SCREW M5X10(W,SW)		3	*			
026-1	0140059260	SCREW	O	3				
027	0140059160	SCREW M5X10(W,SW)		4	*			
027-1	0140059260	SCREW	O	4				
028	6954013000	CUSHION		1	*			
028-1	6954025000	CUSHION	O	1				
029	6954513100	LABEL, CAUTION		1				
030	6957029000	HOSE, SPRAY COMPLETE		1	*			
D10		INC. 31-36			*			
030-1	6957029001	HOSE, SPRAY COMPLETE	O	1				
D10		INC. 31-36						
031	6957025011	HOSE COMPLETE		1	*			
031-1	6957025012	HOSE COMPLETE	O	1				
032	6957025060	CAP, LEVER		1				
033	6957025050	O-RING		1				
034	6957025040	STRAINER		1				

Model BVF104 AKU POSTREKOVAC 18V

Strana 2 / 3

Položka	Objednávacie	Popis	I/C	ks	N/O	Možnosť 1	Možnosť 2	Poznámka
035	6957025030	LEVER COMPL		1	*			
035-1	6957029010	LEVER COMPL	X	1	*			
035-2	6957029010	LEVER COMPL	<	1				
D10		INC. 32-34						
036	6957025020	GRIP		1				
037	6951021001	REGURATOR COMPLETE		1				
038	0561089980	HOSE CLAMP		1				
039	6951503800	TUBE 3		1				
040	0561080010	HOSE CLAMP		2	*			
040-1	345918-1	HOSE CLAMP	O	2				
041	6951024001	NUT, ELBOW		1				
042	6951023000	PACKING, ELBOW		1				
043	6951022000	JOINT, ELBOW		1				
044	6951030000	PUMP ASSY		1	*			
C10	629873-8	DC MOTOR		1	*			
C20	6951029010	SCREW M3X16		8	*			
C30	6951027020	MOTOR BRACKET		1	*			
C40	6951029020	SCREW M4X12		2	*			
C50	6951027030	MOTOR COUPLING		1	*			
C60	6951027010	PUMP COUPLING		1	*			
C70	6951027050	PUMP HOUSING SET		1	*			
D10		INC. 45-50			*			
044-1	126193-6	PUMP ASSEMBLY	S	1				
C10	629948-3	DC MOTOR		1				
C20	6951029010	SCREW M3X16		8				
C30	6951027020	MOTOR BRACKET		1				
C40	6951029020	SCREW M4X12		2				
C50	6951027030	MOTOR COUPLING		1				
C60	6951027010	PUMP COUPLING		1				
C70	6951027050	PUMP HOUSING SET		1				
D10		INC. 45-50						
045	6951502900	PLATE 1		1				
046	6951019000	GEAR SET		1				
047	6951502600	O-RING 1		1				
048	6951503000	PLATE 2		1				
049	6951502700	O-RING 2		1				
050	6951502800	COVER		1				
051	0561100030	HOSE CLAMP		2				
052	6951503700	TUBE 2		1				
053	631898-0	CONTROLLER		1	*			
D10		INC. 54			*			
053-1	620140-4	CONTROLLER	S	1				
D10		INC. 54						
054	6959505700	FUSE		1	*			
054-1	652063-8	FUSE	O	1				
055	638670-1	LEAD UNIT		1				
056	326493-6	JOINT G1/4XG1/4		1				
A01	6959505801	PIPE, SPRAY		1				

