

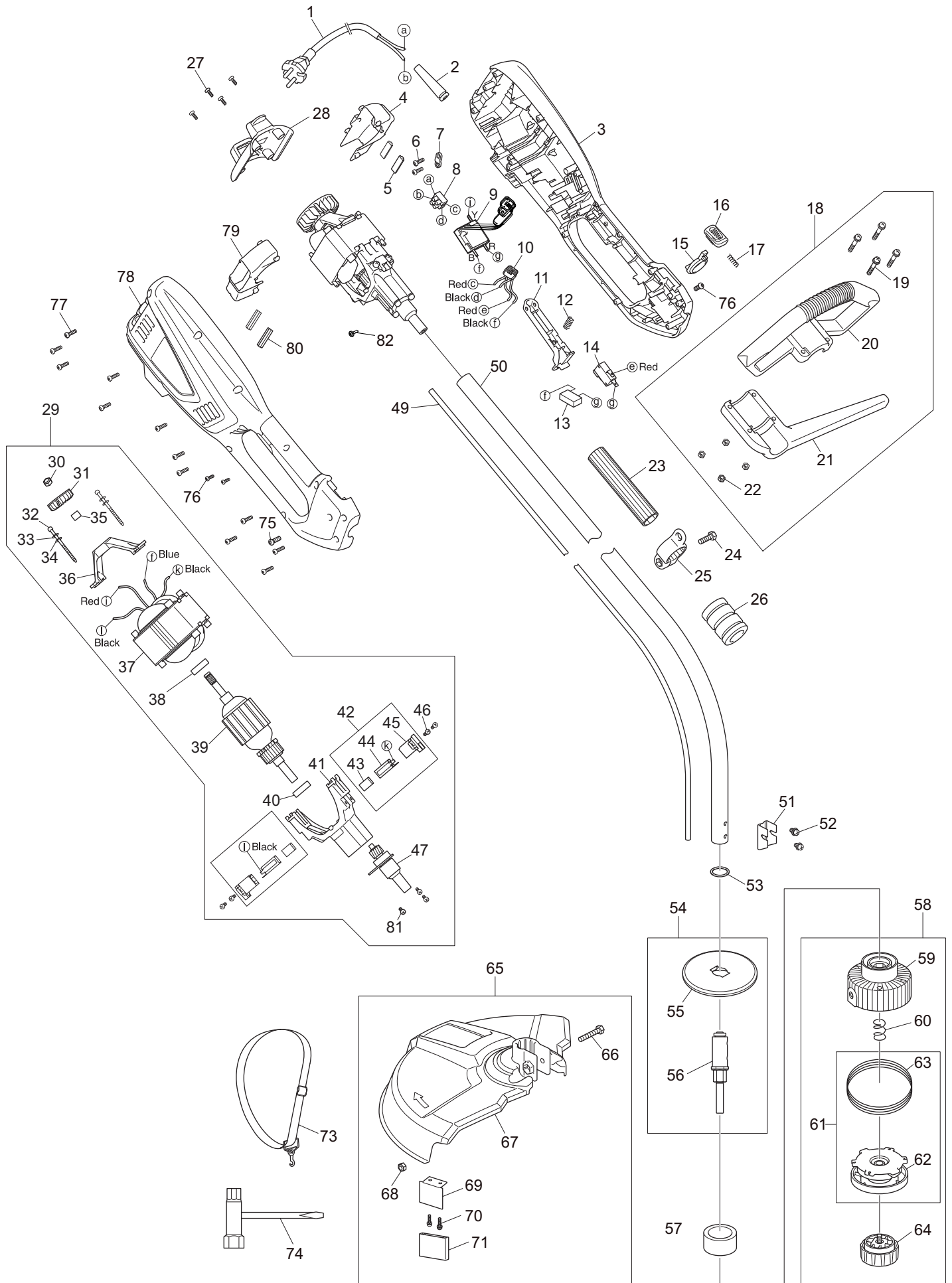


Ersatzteilliste  
Spare Parts List

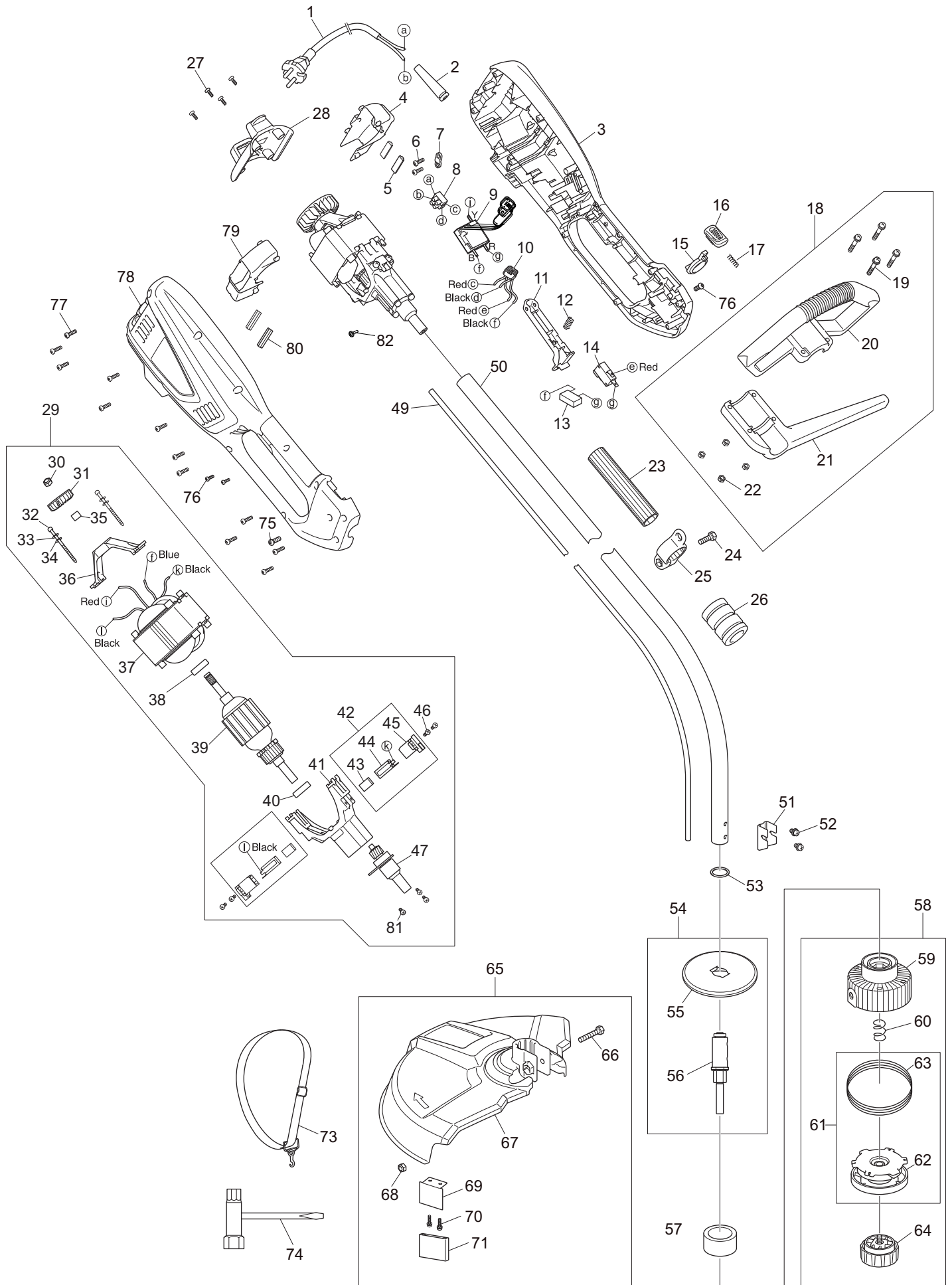
2015-12

ET-101 C  
UR3501

(D, GB)



| Seite / Page | Pos. | ET-101 C | UR3501 | Teil-Nr.<br>Part No. | Hinweise<br>Notes | Bezeichnung               | Spezifikation<br>Specification     | Description                     |
|--------------|------|----------|--------|----------------------|-------------------|---------------------------|------------------------------------|---------------------------------|
| 1            | 1    | 1        | 1      | YA00000497           |                   | ANSCHLUSSLEITUNG          | VDE L=430<br>H05VV-F2x0,75m<br>m2  | POWER CORD & PLUG               |
| 1            | 2    | 1        | 1      | YA00000516           |                   | ZUGENTLASTUNG             |                                    | CABLE PROTECTOR                 |
| 1            | 3    | 1        |        | YA00000661           |                   | GEHÄUSE-SET               | Dolmar rot INC. 78                 | HOUSING ASSEMBLY                |
| 1            | 3    |          | 1      | YA00000660           |                   | GEHÄUSE-SET               | MAKITA blau INC.<br>78             | HOUSING ASSEMBLY                |
| 1            | 4    | 1        | 1      | YA00000562           |                   | LÜFTERGEHÄUSE LINKS       |                                    | LEFT VOLUTE CASE                |
| 1            | 5    | 2        | 2      | YA00000514           |                   | GUMMI                     |                                    | RUBBER PAD                      |
| 1            | 6    | 2        | 2      | YA00000618           |                   | BLECHSCHRAUBE             | ST4x14                             | TAPPING SCREW                   |
| 1            | 7    | 1        | 1      | YA00000547           |                   | KABELKLEMMPLATTE          |                                    | CABLE PRESS BOARD               |
| 1            | 8    | 2        | 2      | YA00000501           |                   | LÜSTERKLEMME              |                                    | TERMINAL SET                    |
| 1            | 9    | 1        | 1      | YA00000643           |                   | ELEKTRONIK                |                                    | PCB CONTROL BOARD               |
| 1            | 10   | 1        | 1      | YA00000499           |                   | DROSSEL                   |                                    | INDUCTANCE                      |
| 1            | 11   | 1        | 1      | YA00000554           |                   | SCHALTERHEBEL             |                                    | SWITCH TRIGGER                  |
| 1            | 12   | 1        | 1      | YA00000513           |                   | FEDER                     |                                    | SPRING                          |
| 1            | 13   | 1        | 1      | YA00000498           |                   | KONDENSATOR               | 0,33µF                             | CAPACITOR                       |
| 1            | 14   | 1        | 1      | YA00000555           |                   | SCHALTER                  |                                    | SWITCH                          |
| 1            | 15   | 1        | 1      | YA00000539           |                   | ROHRDURCHFÜHRUNG          |                                    | SPACING COLLAR                  |
| 1            | 16   | 1        | 1      | YA00000525           |                   | DRUCKKNOPF                |                                    | PUSH BUTTON                     |
| 1            | 17   | 1        | 1      | YA00000511           |                   | DRUCKFEDER                |                                    | COMPRESSION SPRING              |
| 1            | 18   | 1        | 1      | YA00000620           |                   | BÜGELGRIFF KPL.           | INC. 19-22                         | AUXILIARY HANDLE ASSEMBLY       |
| 1            | 19   | 4        | 4      | YA00000621           |                   | KOMBI-SCHRAUBE            | M5x30                              | SLOT THREE COMBINED NYLOC       |
| 1            | 20   | 1        | 1      | YA00000564           |                   | BÜGELGRIFF                |                                    | AUX.HANDLE COVER                |
| 1            | 21   | 1        | 1      | YA00000563           |                   | SEITENGRIF                |                                    | AUX.HANDLE SUPPORT              |
| 1            | 22   | 4        | 4      | YA00000622           |                   | SICHERUNGSMUTTER          | M5                                 | SELF-LOCKING NUT                |
| 1            | 23   | 1        | 1      | YA00000623           |                   | ISOLIERSCHLAUCH           |                                    | INSULATING SHEATH               |
| 1            | 24   | 1        | 1      | YA00000624           |                   | KOMBI-SCHRAUBE            | M6x20                              | PAN HEAD MACHINE SCREW          |
| 1            | 25   | 1        | 1      | YA00000541           |                   | HALTERING F. SCHULTERGURT |                                    | SHOULDER BELT RING              |
| 1            | 26   | 1        | 1      | YA00000521           |                   | GUMMIABDECKUNG            |                                    | RUBBER COVER                    |
| 1            | 27   | 4        | 4      | YA00000625           |                   | BLECHSCHRAUBE             | ST4,2x10                           | PLUM SELF TAPPING SCREW         |
| 1            | 28   | 1        | 1      | YA00000560           |                   | MOTORGEHÄUSEABDECKUNG     |                                    | REAR COVER                      |
| 1            | 29   | 1        | 1      | YA00000626           |                   | MOTOR KPL.                | 230V/1000W INC.<br>30-41,43-47, 81 | MOTOR ASSY                      |
| 1            | 30   | 1        | 1      | YA00000627           |                   | SICHERUNGSMUTTER          | M6                                 | SELF-LOCKING NUT                |
| 1            | 31   | 1        | 1      | YA00000507           |                   | IMPELLER                  |                                    | IMPELLER                        |
| 1            | 32   | 2        | 2      | YA00000538           |                   | SCHRAUBE                  | M4x55                              | SCREW                           |
| 1            | 33   | 2        | 2      | YA00000523           |                   | FEDERUNTERLAGE            | φ4                                 | SPRING PAD                      |
| 1            | 34   | 2        | 2      | YA00000524           |                   | FLACHSCHEIBE              | A3                                 | FLAT WASHER                     |
| 1            | 35   | 1        | 1      | YA00000531           |                   | BUCHSE                    |                                    | SLEEVE                          |
| 1            | 36   | 1        | 1      | YA00000526           |                   | TRÄGER                    |                                    | REAR BRACKET                    |
| 1            | 37   | 1        | 1      | YA00000505           |                   | FELD                      | 230V/50Hz 1000W                    | STATOR ASSY                     |
| 1            | 38   | 1        | 1      | YA00000431           |                   | RILLENKUGELLAGER          | 608                                | BEARING                         |
| 1            | 39   | 1        | 1      | YA00000658           |                   | ANKER                     |                                    | ROTOR ASSEMBLY                  |
| 1            | 40   | 1        | 1      | YA00000430           |                   | RILLENKUGELLAGER          | ø22xø10x6                          | BEARING                         |
| 1            | 41   | 1        | 1      | YA00000629           |                   | LAGERSCHILD B             |                                    | REAR BRACKET ASSEMBLY           |
| 1            | 42   | 2        | 2      | YA00000489           |                   | KOHLEBÜRSTE KPL.          | INC. 43-45                         | CARBON BRUSH ASSY               |
| 1            | 43   | 2        | 2      | 652023960            |                   | KOHLEBÜRSTE               | 2 PCS/SET                          | CARBON BRUSH                    |
| 1            | 44   | 2        | 2      | YA00000502           |                   | KOHLEBÜRSTENANSCHLUSS     |                                    | COPPER BRUSH HOLDER             |
| 1            | 45   | 2        | 2      | YA00000503           |                   | BÜRSTENHALTER             |                                    | BRUSH HOLDER                    |
| 1            | 46   | 4        | 4      | YA00000630           |                   | KOMBI-SCHRAUBE            | M4x12                              | THREE COMBINATION SCREW         |
| 1            | 47   | 1        | 1      | YA00000483           |                   | ROHRANSCHLUSS KPL.        |                                    | SHAFT ASSY                      |
| 1            | 49   | 1        | 1      | YA00000551           |                   | FLEXIBLE WELLE            |                                    | FLEXIBLE SHAFT                  |
| 1            | 50   | 1        | 1      | YA00000495           |                   | ROHR                      |                                    | TUBE ASS'Y                      |
| 1            | 51   | 1        | 1      | YA00000527           |                   | BEFESTIGUNGSBLECH         |                                    | FIXING FRAME                    |
| 1            | 52   | 2        | 2      | YA00000647           |                   | KOMBI-SCHRAUBE            | M5x10                              | THREE COMBINATION MACHINE SCREW |
| 1            | 53   | 1        | 1      | YA00000534           |                   | DICHTRING                 |                                    | SEALING RING                    |
| 1            | 54   | 1        | 1      | YA00000485           |                   | WELLE                     | INC. 55-56                         | OUTPUT SHAFT ASS'Y              |
| 1            | 55   | 1        | 1      | YA00000432           |                   | WICKELSCHUTZ              |                                    | WINDING PREVENTER               |
| 1            | 56   | 1        | 1      | YA00000482           |                   | WELLE                     |                                    | SHAFT JOINT ASSEMBLY            |
| 1            | 57   | 1        | 1      | YA00000568           |                   | STAUBDICHTUNG             |                                    | DUST SEAL                       |
| 1            | 58   | 1        | 1      | YA00000649           |                   | FADENKOPF                 | INC. 59-60,62-64                   | TRIMMER HEAD ASS'Y              |
| 1            | 59   | 1        | 1      | YA00000650           |                   | GEHÄUSE                   |                                    | CASE                            |
| 1            | 60   | 1        | 1      | YA00000512           |                   | DRUCKFEDER                |                                    | COMPRESSION SPRING              |



| Seite / Page | Pos. | ET-101 C | UR3501 | Teil-Nr.<br>Part No. | Hinweise<br>Notes | Bezeichnung               | Spezifikation<br>Specification | Description               |
|--------------|------|----------|--------|----------------------|-------------------|---------------------------|--------------------------------|---------------------------|
| 1            | 61   | 1        | 1      | YA00000651           |                   | SPULE MIT FADEN           | INC. 62-63                     | SPOOL WITH LINE           |
| 1            | 62   | 1        | 1      | YA00000476           |                   | SPULE                     |                                | SPOOL                     |
| 1            | 63   | 1        | 1      |                      |                   | MÄHFADEN                  | ø 2,0 mm                       | NYLON LINE                |
| 1            | 64   | 1        | 1      | YA00000652           |                   | KNOPF                     |                                | KNOB ASSEMBLY             |
| 1            | 65   | 1        | 1      | YA00000653           |                   | SCHUTZHAUBE KPL.          | INC. 66-71                     | PROTECTOR ASS'Y           |
| 1            | 66   | 1        | 1      | YA00000654           |                   | SCHRAUBE                  | M6x35                          | BOLT                      |
| 1            | 67   | 1        | 1      | YA00000544           |                   | SCHUTZHAUBE               |                                | PROTECTOR                 |
| 1            | 68   | 1        | 1      | YA00000627           |                   | SICHERUNGSMUTTER          | M6                             | SELF-LOCKING NUT          |
| 1            | 69   | 1        | 1      | YA00000529           |                   | FADENMESSER               |                                | LINE CUTTER               |
| 1            | 70   | 2        | 2      | YA00000655           |                   | SICHERUNGSSCHRAUBE        | ST4x12                         | SELF-LOCKING SCREW        |
| 1            | 71   | 1        | 1      | YA00000518           |                   | MESSERSCHUTZ              |                                | BLADE COVER               |
| 1            | 73   | 1        | 1      | YA00000639           |                   | SCHULTERGURT              |                                | STRAP                     |
| 1            | 74   | 1        | 1      | YA00000437           |                   | KOMBISCHLÜSSEL            |                                | BOX WRENCH                |
| 1            | 75   | 2        | 2      | YA00000640           |                   | SCHRAUBE                  | M5x10                          | SCREW                     |
| 1            | 76   | 2        | 2      | YA00000641           |                   | BLECHSCHRAUBE             | ST3x10                         | PLUM SELF TAPPING SCREW   |
| 1            | 77   | 12       | 12     | 652023653            |                   | SCHRAUBE SELBSTSCHNEIDEND | 4x16                           | SELF-TAPPING SCREW        |
| 1            | 78   | 1        |        | YA00000661           |                   | GEHÄUSE-SET               | Dolmar rot INC. 3              | HOUSING ASSEMBLY          |
| 1            | 78   |          | 1      | YA00000660           |                   | GEHÄUSE-SET               | MAKITA blau INC. 3             | HOUSING ASSEMBLY          |
| 1            | 79   | 1        | 1      | YA00000561           |                   | LÜFTERGEHÄUSE RECHTS      |                                | RIGHT VOLUTE CASE         |
| 1            | 80   | 2        | 2      | YA00000514           |                   | GUMMI                     |                                | RUBBER PAD                |
| 1            | 81   | 3        | 3      | YA00000630           |                   | KOMBI-SCHRAUBE            | M4x12                          | THREE COMBINATION SCREW   |
| 1            | 82   | 1        | 1      | YA00000657           |                   | KREUTZSCHLITZSCHRAUBE     | M3x6                           | CROSS RECESSED HEAD SCREW |

ET-101 C, UR3501



1

ET-101 C, UR3501  
ET-101 C, UR3501

|  | <b>Zeichenerklärung</b>  | <b>Key to symbols</b>   |
|--|--|---|
| <b>=&gt; 1999999</b><br><b>2000000 =&gt;</b><br><b>2003.04 =&gt;</b><br><b>TI 2003/07</b><br><b>Acc.</b><br><b>=</b><br><b>{</b><br><b>m</b><br><b>Corr.</b> | Produktion bis Serien-Nr.<br>Neues Teil ab Serien-Nr.<br>Neues Teil ab Jahr / Monat<br>Siehe Technische Information Jahr / Nr.<br>Zubehör (nicht im Lieferumfang)<br>Keine Serienausführung, jedoch verwendbar<br>Beinhaltet Positions-Nr.<br>Meterware<br>Druckfehlerberichtigung | Production to serial number<br>New part from serial number<br>New part from Year / Month<br>See Technical Information Year / No.<br>Accessories (not included in the delivery inventory)<br>No standard execution, may be used<br>Contains item number<br>Sold by the meter<br>Error correction |
|  | Änderungen vorbehalten   | Specifications subject to change without notice   |